

THE **RPS**

ROYAL
PHOTOGRAPHIC
SOCIETY

**GERMANY
CHAPTER**

The Beauty of Munich's Subway Architecture

BY CHRIS RENK

Table of Content

INTRO

01

Facts About

Munich's Subway System in Numbers

Tarif Zones

Fares for your zones

02

The Architecture

The mid-1960s

In the Eighties

Upon the Nineties

03

The Making of

Photography restrictions

My Photo Equipment

Software used for Editing

Research Sources

Question & Answering



01

Facts About

THE RPS
ROYAL
PHOTOGRAPHIC
SOCIETY

GERMANY CHAPTER

Online Talk

Online Talk

Online Talk

Online Talk



Fare Zones

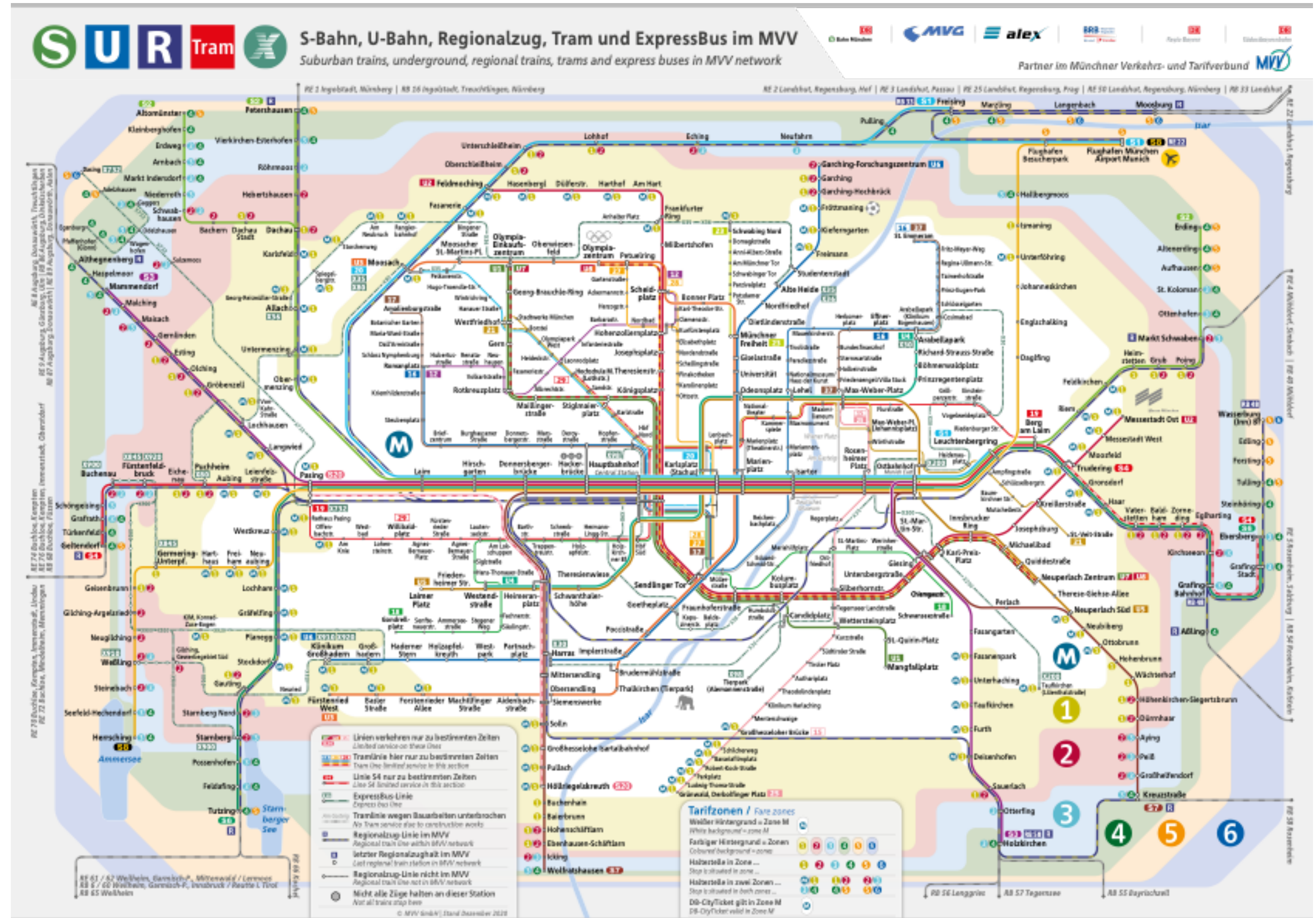
Munich's public-transportation system, the MVV, has two rapid-transit networks.

The U-Bahn, which for the city of Munich.

The S-Bahn, which serves both Munich and its suburbs.

Six Fare Zones – M to M+6.

Most of the scenic stations are on Zone M.



02

The Architecture

The mid-1960s

When the first tenders for underground stations were sent out to architectural firms in the mid-1960s, interest was relatively low.

Only seven submissions had to be evaluated by the judges.

The underground architecture was seen as neither interesting nor lucrative.

Simplicity and functionality were the principles of the early underground station buildings in Munich.



© Buch 25 Jahre U-Bahn-Bau in München

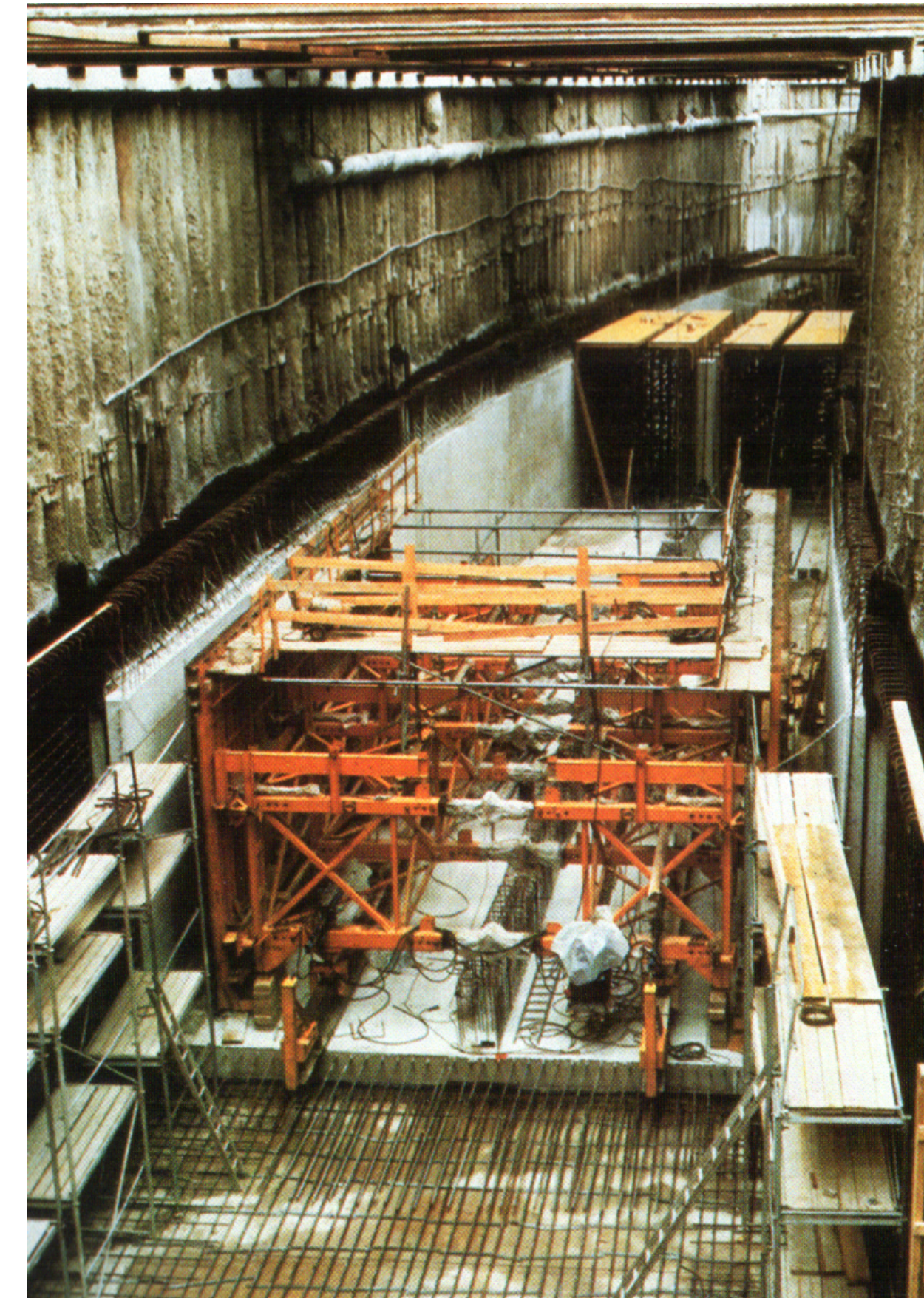
In the Eighties

In the eighties, this attitude gradually changed, and financial resources earmarked for the stations' design also increased.

Simplicity and functionality were the principles of the early underground station buildings in Munich. Bright and light spaces were to avoid a feeling of oppression in all stations.

The early years' linear plans gradually gave way to curved line forms, and the character of the surface also began to be incorporated into the station design.

There were also changes in the materials: while artificial stone, fibre cement panels and concrete were popular elements, in the beginning, steel, aluminium and glass are now gaining importance.



© Buch 25 Jahre U-Bahn-Bau in München



Upon the Nineties

Partially elaborate designs of the platforms and the rear track walls characterise most of the more recent stations. High, pillarless station halls usually conveyed a bright and friendly impression of space.

With shallow depths, attempts were also made to incorporate daylight into the interior design.

Wherever this was not possible, they installed indirect lighting with reflectors on the ceilings, to get away from earlier stations' uniformity with long rows of fluorescent tubes.

Precisely calculated lighting concepts enabled lighting concepts with reflective walls and ceilings, and thus, a lot of indirect lighting.



© Buch 25 Jahre U-Bahn-Bau in München



Selection of Noteworthy Subway Stations

- 1

Böhmervaldplatz
- 2

Milbertshofen
- 3

Großhadern
- 4

Dülferstraße
- 5

Frankfurter Ring
- 6

Westfriedhof
- 7

Hasenbergl
- 8

Candidplatz
- 9

Wettersteinplatz
- 10

St.-Quirin-Platz
- 11

Germ
- 12

Messestadt West
- 13

Josephsburg
- 14

Messestadt Ost
- 15

Olympia Einkaufs-Zentrum



Stand: Dezember 2020
CC-BY-SA Zeno Heilmaier



Online Talk



03

The Making of

Photography restrictions in Munich's Subways

Commercial photography and filming

Written permission is required for all commercial photography and filming in the vehicles (underground, tram, bus) or the operating facilities (underground stations, MVG Museum, Info points, workshops, etc.).

Spontaneous snapshots (without a tripod) for exclusively private purposes are at the operational staff's discretion but will typically not be objected.

Requests should be sent at least one week in advance via the contact form (listed below) or as an email to the appropriate office of the MVG.

You should provide the following information:

What and where would you like to photograph/film.

When and in which period you would like to photograph/film.

Address and telephone number of the Photographer.

Kontakt



Münchner Verkehrsgesellschaft mbH
V-11, Öffentlichkeitsarbeit
Emmy-Noether-Straße 2
80287 München

Telefon: 089 2191-2174
Fax: 089 2191-2151
Kontaktformular
E-Mail: film@mvg.de

<https://www.mvg.de/services/kontakt/formular.html>



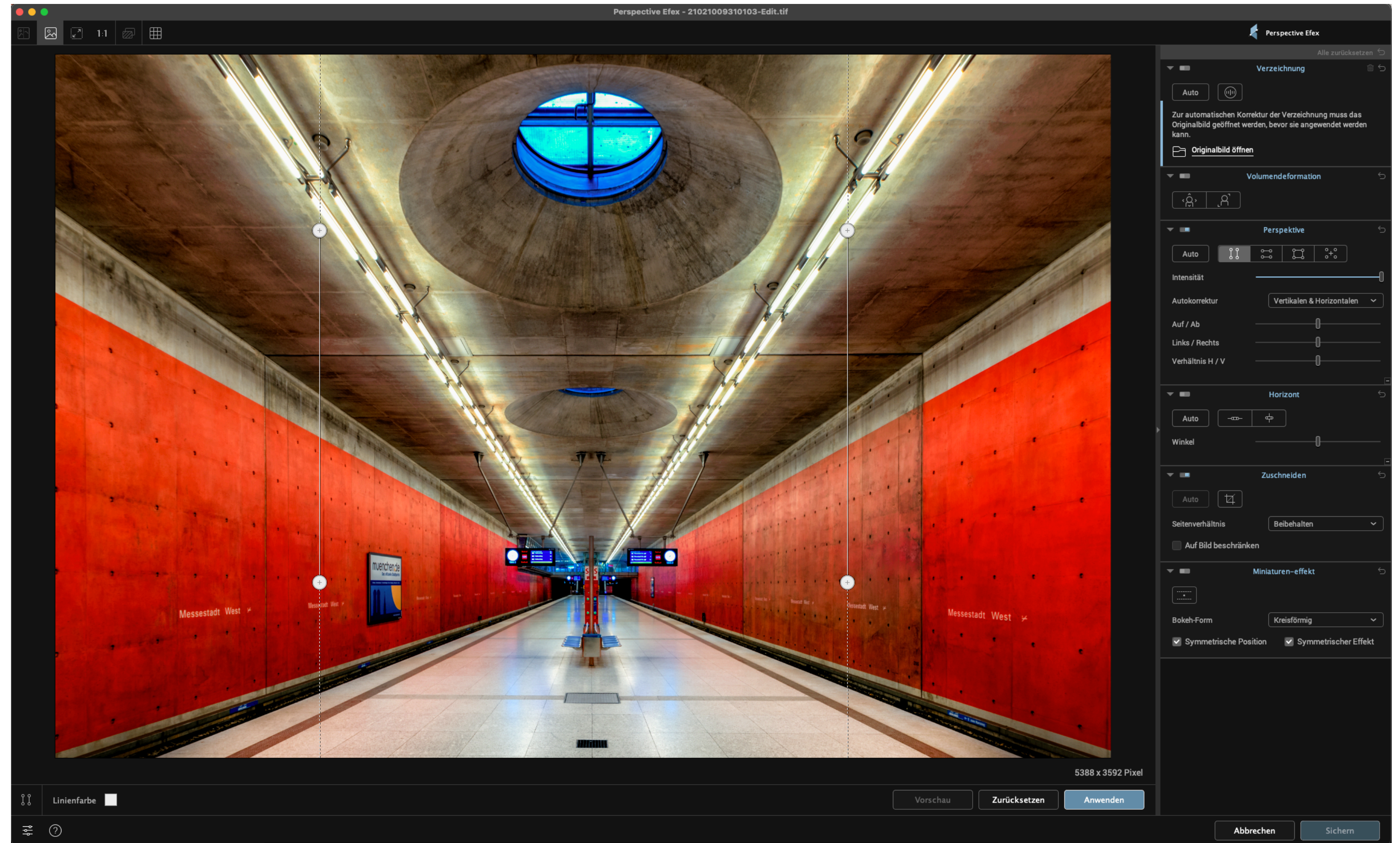
Photo Equipment

- DSLR (D850) w. (RRS) L-Bracket
- Nikkor 14 – 24mm 2.8
- Nikkor 24 – 70mm 2.8
- Gitzo 3 Tripod XLS (200cm)
- FML 58 Ballhead (60kg Load)
- MC36 Remote Control
- X-Rite Color Checker



Software

- Adobe Lightroom (Image Database & Initial Editing)
- Adobe Photoshop (Editing & Nik Collection)
- Perspective Efix (part of Nik Collection)



Research Sources

Online:

<https://www.mvv-muenchen.de/en/maps-stations/maps/index.html>

<https://www.u-bahn-muenchen.de> (only German language)

500px

Flickr

Books:

Subway Architecture in Munich – Christoph Hackelsberger (German and English)

25 Years Subway Construction in Munich – by the City's Construction Department

