

## PROJECTOR – INFORMATION FOR SPEAKERS

The Thames Valley Centre has a Canon projector, which we invite our speakers to use if they wish. It is a **CANON WUX500 LCoS** – the projector of choice for most camera clubs. It features:

- Native 1920 x 1200 pixel (WUXGA) resolution and Canon LCoS technology
- 5000 lumens brightness and native 2000:1 contrast ratio
- sRGB image mode (the mode we use by default, but we can change this)
- 1.8x zoom lens and Auto Setup
- PC-less presentation from USB flash drive or USB-connected camera

### Inputs:

- We now connect exclusively to the **HDMI** input on the projector, which accommodates all anticipated resolutions. We provide a 10-metre HDMI cable with adaptors and converters for **USB-C** and **Mini DisplayPort** if required. We prefer to take the audio to our sound system through the HDMI connection via the projector, with or without adaptor as required). We can optionally take the audio from your laptop's Bluetooth or audio 3.5mm jack output if that is your preference.



We will set up and align the projector for either a 1920 x 1200 or 1600 x 1200 image to fit our 4:3 screen, and check its performance with a set of test images via its USB input.

### Connecting to a laptop (PC)

The two main modes for connection are 'Extend Primary Screen' and 'Duplicate Primary Screen', though these options may depend on your Operating System.

#### 1. Extend Primary Screen

The 'extension' should be operated at the 'recommended' resolution of 1400 x 1050 if your interface allows it. You can drag non-maximised panes from your desktop primary display to the projector display, and then maximise on that display (note the projected display will not now be visible on the laptop).

#### 2. Duplicate Primary Screen

You can operate both screens (at the same resolution) up to 1600 wide and up to 1200 high, in 4:3 and 16:9 (widescreen) modes, for example:

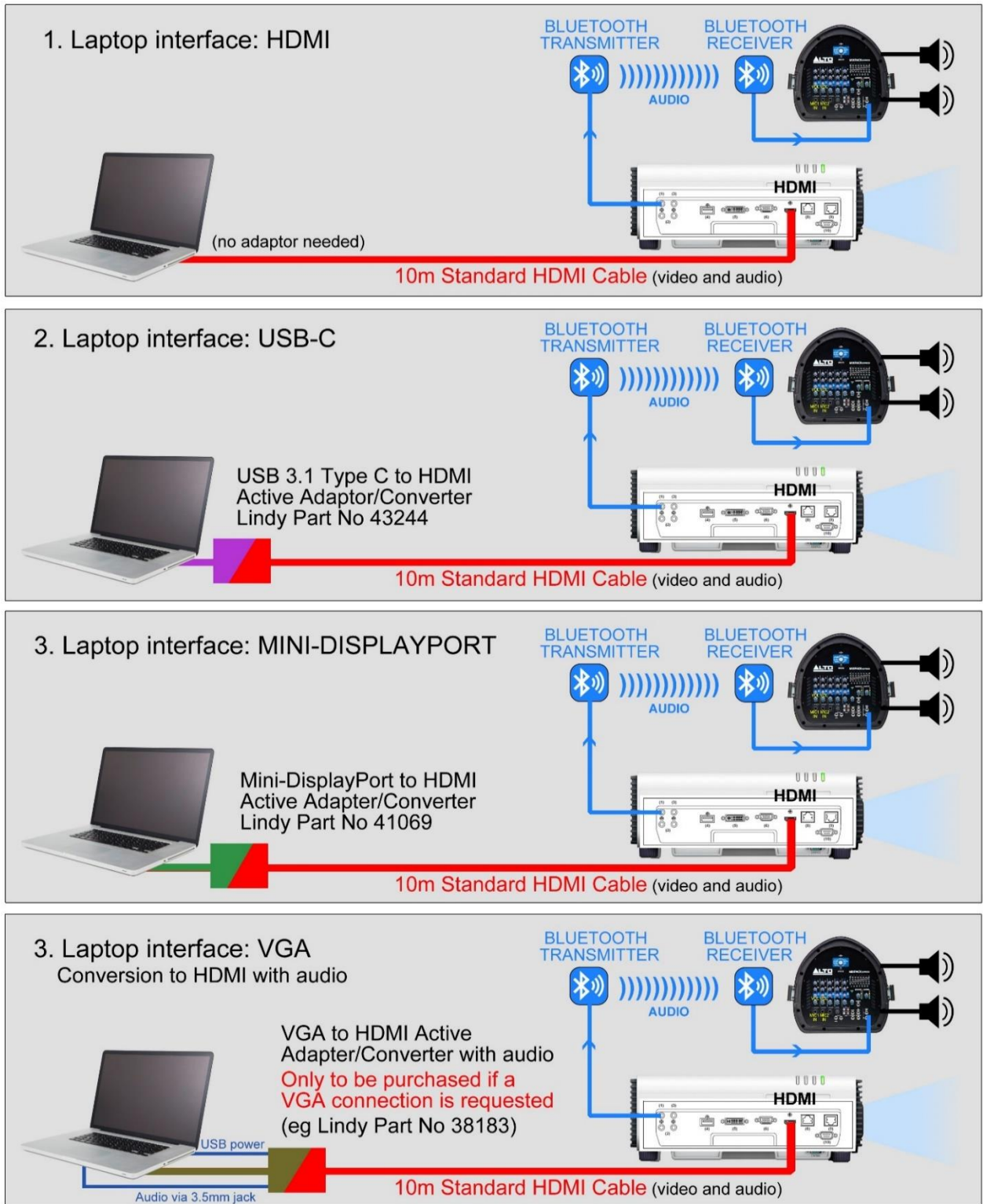
- Aspect ratio 4:3: 1024 x 768; 1280 x 960; 1400 x 1050; 1440 x 1080; 1600 x 1200
- Aspect ratio 16:9 (widescreen): 1920 x 1080; 1366 x 768; 1600 x 900

**If you have any questions please contact Technical Coordinator:**

Dave Beaumont: [dave.beaumont@tvdig.org.uk](mailto:dave.beaumont@tvdig.org.uk).

See page 2 for connection options >>

## WUX500 PROJECTOR INTERCONNECT OPTIONS



Author: Alan Cross