

**SOUTH EAST REGION NEWSLETTER**  
**March 2021**

March 2021

Hello everyone,

Welcome to the third newsletter of the year. The time has flown past and there is even a ray of sunshine on the horizon. We will continue to provide lots of stimulating events online, but we are now starting to plan for outdoor events.

Here are a few highlights from the forthcoming programme of events from the RPS SE Region and DIG SE group:

- The DIG SE events seem to sell out quickly, such is the reputation gained by accomplished tutors like Celia Henderson, Polina Plotnikova and Glenys Garnett. As we said in the details last month however, we are trying to get some of these presenters to run another workshop. There isn't quite enough detail to actually list them in the newsletter yet, but here is a flavour of what we are arranging-
  - **Photoshop Essentials** for those of you who need some Photoshop basics before enrolling on courses like brushes and textures
  - **Advanced Photoshop Compositing** for those of you at the other end of the scale
  - More **Brushes and textures** workshops
- The RPS SE Photoshop and Lightroom events are also amazingly well attended. Series 5 of **Flowers and Photoshop for the Creative Photographer** is full, but we are organising more and close to announcing-
  - Series 6, **Flowers and Photoshop for the Creative Photographer**
  - **Advanced Photoshop - Brushes, Textures and patterns**
  - More **Lightroom** workshops

**As these workshops should materialise this month, we will publish a special newsletter with the dates to enable you in the SE to book them.**

- We let you know in January about *Hans Strand's retrospective*. At the time of writing this, there are still places, and remember it's free!
- The very first **Meaningful Portraits at Home** workshop given by Sukhy Hallait has a couple of spaces left for the end of March and several in April.
- Our first *Online LRPS advisory day* is full, but there is still space on the second on 7/5/21
- The online exhibition is taking shape and we have secured the use of some software to handle the images before they are put in an online exhibition. More news, I hope, by next month.

- We have reserved dates for a number of outside events as you will see in the newsletter.
- Finally, I mentioned the Project Frontiers last time. (*A collaborative project with participants working together to produce a body of images on the topic of "Edgelands," the transition zones between urban and rural areas.*) The second iteration of the brief has been received and the third and final one is due to be ready to launch the project in April.

I have been asked to remind everyone in the RPS that there is an EGM on Saturday, 27 March at 11.00am. The general business of the meeting will be to approve proposed amendments to the RPS By Laws.

Here is link: <https://rps.org/about/governance-review-2020/egm-2021/>

Lastly, we are looking for volunteers to work within the RPS SE and/or DIG committees. The main roles we are looking for are event coordinators. This means you get involved in the ideas for events, booking, and then running them on behalf of the RPS. It's very rewarding, and it would introduce you to whole new world of like-minded people. If you are at all interested please feel free to email me as below for any details.

Thank you all for your support

John Gough, RO SE Region

[southeast@rps.org](mailto:southeast@rps.org)

## Combined RPS SE & DIG SE event programme - March 1st 2021

### Presenting Your Work

[12/03/2021](#)



A chance to present your work in a panel with follow up image critique with Joe Houghton. This single course consists of 3 workshops. and is currently sold out.

*Click on date(s) for more info on individual courses on RPS.COM*

### Online LRPS Advisory Day 1 & 2

[20/03/2021](#)

[07/05/2021](#)



As this event will be online, all images will be reviewed/viewed digitally. The advisor will give feedback on the intended print submissions against the criteria for the Licentiate distinction but will not be able to comment on the print quality. There are 2 separate events and the 2nd event still has some places left.

*Click on date(s) for more info on individual courses on RPS.COM*

### Meaningful Portraits at Home 1 & 2

[25/03/2021](#)

[16/04/2021](#)



Sukhy Hallait will show you how to create a meaningful portrait at home. These may be self portraits or someone in your household. He will discuss how to capture the personality and mood of a subject using available light and the surrounding environment. He will set a portrait challenge will be reviewed in the second workshop, 2 weeks later.

There are 2 separate and identical courses on this subject.

There still a few remaining places on each event.

*Click on date(s) for more info on individual courses on RPS.COM*

### Long exposure on the Sussex coast

[26/03/2021](#)



A virtual guided tour of the Sussex coast, with a specific emphasis on long exposure, exploring light and tone along this varied landscape with follow up image critique with Philip Bedford. This single course consists of 2 workshops. If this course(s) is full, there will be another one in the future, depending on demand.

*Click on date(s) for more info on individual courses on RPS.COM*

## Combined RPS SE & DIG SE event programme - March 1st 2021

### Keynote Speaker: Hans Strand

[27/03/2021](#)

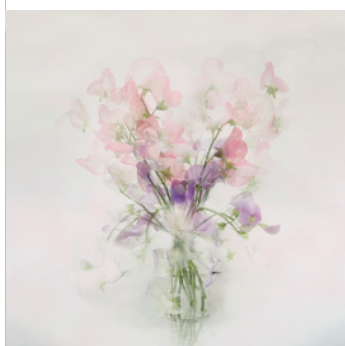


Hans Strand is an internationally acclaimed landscape photographer. He will give a retrospective from his homeland in Sweden. This event is free to all RPS members.

*Click on date(s) for more info on individual courses on RPS.COM*

### Brushes Lunch and Learn

[13/04/2021](#)



How to use and create brushes in Photoshop using individual project work and online tuition with Celia Henderson. This is the third course of 3 identical courses. Each course has 3 workshops. If this course(s) is full, there will be another one in the future, depending on demand.

*Click on date(s) for more info on individual courses on RPS.COM*

### Landscapes and Lightroom - from import to export series 3

[25/4/21](#)

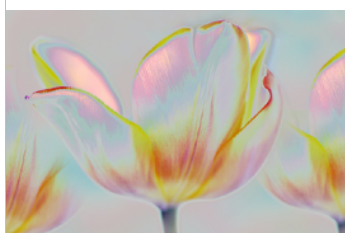


This series of 4 online modules allows the improver to progress towards working with some of the many creative, non-destructive editing that it offers. This online interactive training programme takes place over 4 weeks with three workshops per week for each module.

*Click on date(s) for more info on individual courses on RPS.COM*

### Flowers and Photoshop for the Creative Photographer series 5/part 1

[16/5/21](#)

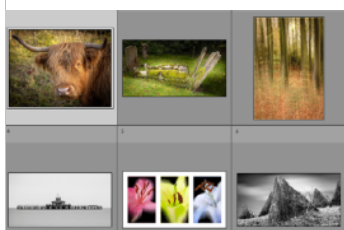


Using prepared examples and “Recipe Cards”, Celia Henderson LRPS, a Flower photography fanatic and distance teaching specialist, has adapted her face to face workshops to work in a Zoom based distance teaching environment. Following 4 successful courses, this is the 5th series of this course but a 6th is in a planning stage. Each course has 3 separate parts, each becoming more advanced and bookable separately.

*Click on date(s) for more info on individual courses on RPS.COM*



## Combined RPS SE & DIG SE event programme - March 1st 2021



### Online exhibition

June

Using software, the plan is to invite images from the region which will be shown in a virtual online exhibition.

*Event still at planning stage, watch this space*

---

### British Wildlife Centre

07/07/2021



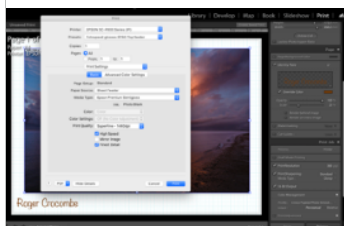
Get really close to British wildlife including badgers, red squirrels, owls and polecats. Go inside the fox, otter and Scottish wildcat enclosures, getting within a few feet and avoiding fences. Refreshments and a light buffet lunch included. This event is wholly dependent on the prevailing Covid 19 restrictions. We will not publish a link until we are more sure of the likelihood of it going ahead.

*Event still at planning stage, watch this space*

---

### Printing with Adobe Lightroom Classic series 2

[1/8/21](#)



This series of 6 online workshops takes the intermediate printer through the various stages of printing an image using Lightroom Classic (desktop) application looking at the different options and their impact on the final result.

*Click on date(s) for more info on individual courses on RPS.COM*



---

### Birds of Prey workshop

11/08/2021

A whole day photographing Birds of Prey from around the world, on perches and flying in a nearby wood and field. This event is wholly dependent on the prevailing Covid 19 restrictions. We will not publish a link until we are more sure of the likelihood of it going ahead.

*Event still at planning stage, watch this space*

## Combined RPS SE & DIG SE event programme - March 1st 2021

### LRPS Advisory Day

12/09/2021



LICENTIATE

As a participant you will have the opportunity to discuss your images with assessors for comment and guidance. This event is booked to take place at Crawler Down, but is wholly dependent on the prevailing Covid 19 restrictions. We will not publish a link until we are more sure of the likelihood of it going ahead.

*Event still at planning stage, watch this space*

---

### AGM

October



SOUTH EAST  
REGION

An AGM is planned, where the normal business will be followed by a talk by a renowned photographer and a competition. This event is wholly dependent on the prevailing Covid 19 restrictions and we will not publish a link until we are more sure of the likelihood of it going ahead.

*Event still at planning stage, watch this space*

---

### ARPS Advisory Day

17/10/2021



ASSOCIATE

A day open to both members and non-members of the Society, this is intended to assist anyone considering an application for an Associate distinction in the categories of Fine Art, Documentary and Landscape. This event is booked to take place at Crawler Down, but is wholly dependent on the prevailing Covid 19 restrictions. We will not publish a link until we are more sure of the likelihood of it going ahead.

*Event still at planning stage, watch this space*

---

### Celebration of Distinctions

14/11/2021



LICENTIATE

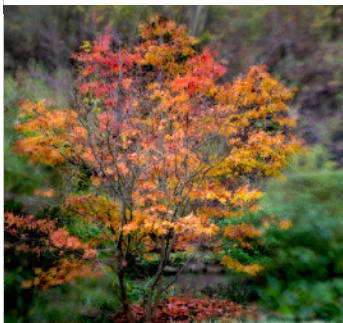
ASSOCIATE

FELLOWSHIP

This full day event will provide an opportunity to see examples of successful LRPS, ARPS and FRPS print panels, to illustrate the standards required to achieve these distinctions, and to inspire you to take on the challenge of starting along the distinctions path. This event is booked to take place at Crawler Down, but is wholly dependent on the prevailing Covid 19 restrictions. We will not publish a link until we are more sure of the likelihood of it going ahead.

*Event still at planning stage, watch this space*

Combined RPS SE & DIG SE event programme - March 1st 2021



**Tree Workshop**

November

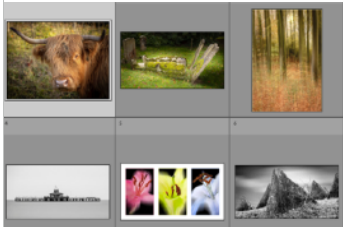
This workshop is planned to allow you to photograph the beauty of Autumn with the guidance of an expert. This event is wholly dependent on the prevailing Covid 19 restrictions. We will not publish a link until we are more sure of the likelihood of it going ahead.

*Event still at planning stage, watch this space*

---

**SE exhibition**

December



Following our virtual exhibition, the plan is to hold an exhibition of images from the SE. This event is is wholly dependent on the prevailing Covid 19 restrictions and we will not publish a link until we are more sure of the likelihood of it going ahead.

*Event still at planning stage, watch this space*

---